

| Dimension (Unit: mm) | | | | | | | | | | |
|----------------------|-----|-----|-----|------|-----|-----|------|-------|----|------|
| Model | A | B | C | D | E | F | G | H | I | J |
| UD4i/8i/12i/16i | 138 | 168 | 280 | 39.6 | 306 | 424 | 15.5 | 102.5 | 58 | 15.5 |

| Technical parameters | | | | | |
|---|-------------------|--------------------|--------------------|--------------------|--------------------|
| Model | Unit | UD4i | UD8i | UD12i | UD16i |
| Pumping speed (50/60Hz) | m³/h | 4 | 8 | 12 | 16 |
| Ultimate Total Pressure without gas ballast | Pa | 5x10 ⁻¹ | 5x10 ⁻¹ | 5x10 ⁻¹ | 5x10 ⁻¹ |
| Ultimate Total Pressure with gas ballast | Pa | 3 | 3 | 3 | 3 |
| Motor | Voltage Input | V | 200-240 | 200-240 | 200-240 |
| | Voltage Frequency | Hz | 50/60 | 50/60 | 50/60 |
| | Power Rating | kW | 0.25 | 0.25 | 0.37 |
| Current | A | 2.5 | 2.5 | 3.5 | 3.5 |
| Inlet & Exhaust Port | / | KF25 | KF25 | KF25 | KF25 |
| Oil Capacity | L | 0.8 | 0.8 | 0.8 | 0.8 |
| Ambient Temperature | °C | 5-40 | 5-40 | 5-40 | 5-40 |
| Noise | dB | ≤50 | ≤52 | ≤52 | ≤54 |
| Weight | kg | 16.5 | 16.5 | 17 | 17 |
| Dimension (L*W*H) | mm | 424x168x280 | 424x168x280 | 424x168x280 | 424x168x280 |

UD i Series

Leak-Proof, Corrosion-Resistant Vacuum Pump Intelligent, Energy-Efficient & Reliable

UD i Series

Leak-Proof, Corrosion-Resistant Vacuum Pump Intelligent, Energy-Efficient & Reliable

The UD i Series represents the cutting edge in scientific vacuum technology, delivering exceptional reliability and easy maintenance. Its corrosion-resistant core components ensure durability against harsh chemical exposure. Featuring advanced shielding and magnetic drive technology, these pumps achieve hermetic sealing to eliminate oil leakage issues associated with traditional dynamic seals, guaranteeing reliable operation even in high-moisture and highly corrosive gas environments.

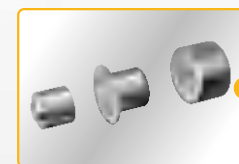
With a built-in forced lubrication gear pump, automatic anti-backflow design, and high-quality integrated oil mist filter, the UD i-Series provides a clean, quiet, and worry-free vacuum experience. Equipped with a CE-certified brushless DC motor and one-touch ECO mode, it maximizes energy efficiency without compromising performance.

Ideal for scientific research, laboratory applications, medical/pharmaceutical processes, and precision industrial manufacturing.



Clean & Eco-Friendly

Auto anti-backflow valve prevents oil contamination during shutdown; Built-in high-performance oil mist filter eliminates oil vapor pollution



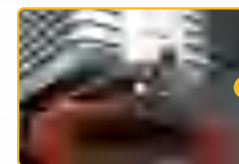
No Oil Leakage

Utilizing shielded magnetic drive technology to achieve hermetic sealing, ensuring completely clean and oil-leakage-free operation



Corrosion-Resistant

Full corrosion-proof construction with fluoropolymer seals & stainless springs

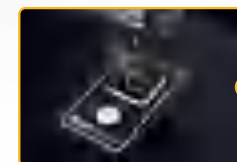


Easy Oil Change

Integrated ball valve with built-in oil reservoir

Eco High Energy Efficiency

Featuring IE4-grade brushless motor with one-touch ECO mode for quieter and greener performance



Mass Spectrometer



Glove Box



Scanning Electron Microscope



Coating